

DIGILINK2 USER GUIDELINE

Abstract

DIGILINK2 is a software for digital stopwatch upload data to computer.

SYSTEM: Windows XP, Windows 7, Windows 10, Windows 11

SOFTWARE

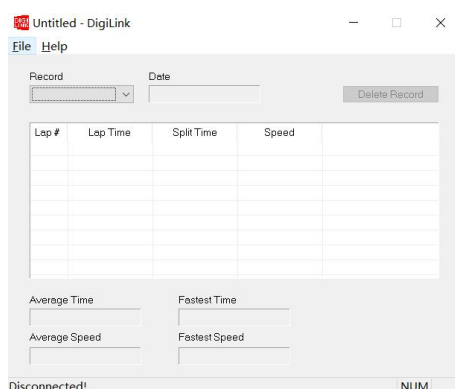
1. Software install

Insert the U-disk to computer in the product package. Find the file [Digilink2Setup], double click [setup.exe] to install the software.



2. Finish install

Once finished install, the software will open automatically.



*DIGILINK2 will automatically run when the computer is open. You can find the DIGILINK2 icon in the bottom right corner of Windows taskbar.



*If the DIGILINK2 do not run, please try to close the antivirus software or firewall, and reinstall the DIGILINK2.

*If DIGILINK2 is accidentally cleared by antivirus software, please reinstall and add DIGILINK2 to the whitelist of antivirus software.

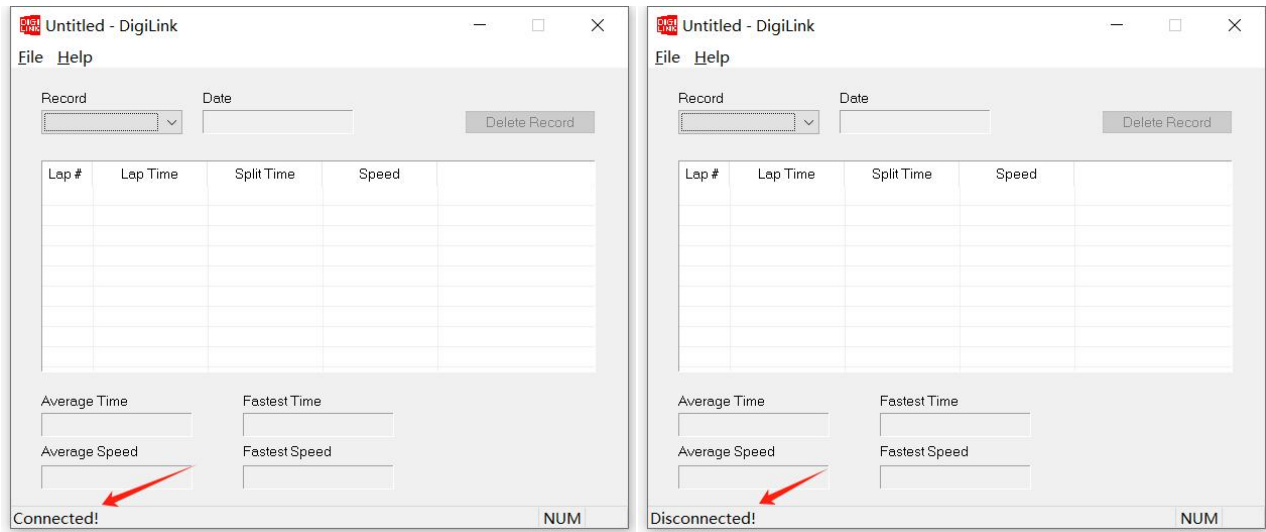
MEMORY DATA UPLOAD

1. Connect the stopwatch and computer by the Data Transfer Cable.

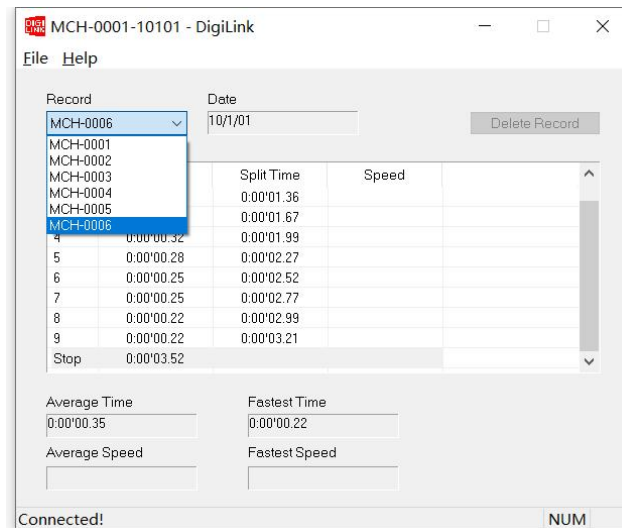
Once the cable is successfully connect to computer, DIGILINK2 will run and open automatically.

Showing [Connect!] indicates DIGILINK2 is ready for the stopwatch data upload.

Showing [Disconnected!] indicates the computer do not find the USB cable. Please clean the USB plug and try again. If it did not work, please contact the dealer.

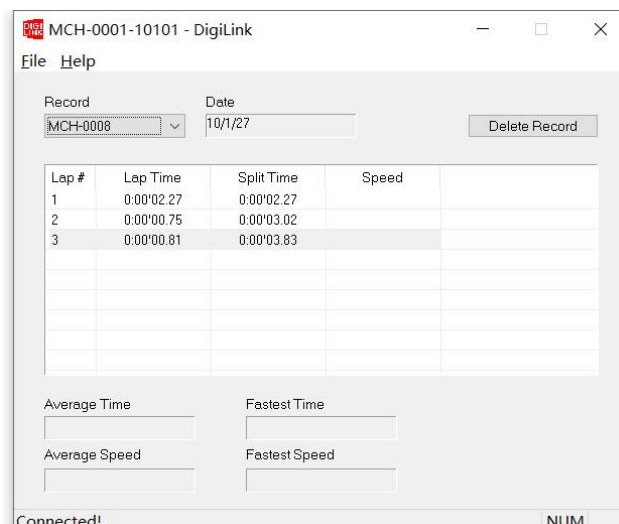


2. Switch the stopwatch to upload mode and upload data. The memory data will be upload to DIGILINK2 automatically.
*Please refer to the stopwatch manual for the upload operation.



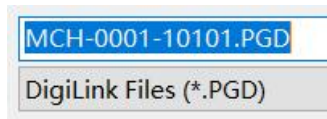
DATA SYNCHRONIZATION UPLOAD

1. Ensure the stopwatch is not in chronograph state. Connect the stopwatch and computer by the Data Transfer Cable.
2. Start chronograph, the data will automatically transfer to DIGILINK2.



PGD format DATA SAVE

Clikc [File-save], this operation will save all the MCH data in the .PGD format file.
The .PGD format file can be review by DIGILINK2 software.



TXT format DATA SAVE

Clikc [File-Export], this operation will save all the MCH data in the .TXT format file.
The .TXT format file can be opened by TEXT or EXCEL.



TEXT file

```
23/1/01
MCH-001
Lap# Lap Time Split Time Speed
Stop time 0:00'05.39

23/1/01
MCH-002
Lap# Lap Time Split Time Speed
1 0:00'00.67 0:00'00.67
2 0:00'00.22 0:00'00.89
3 0:00'00.19 0:00'01.08
4 0:00'00.37 0:00'01.45
5 0:00'00.19 0:00'01.64
Stop time 0:00'01.89
Average time 0:00'00.32
Fastest time 0:00'00.19
```

EXCEL file

2023/1/1			
MCH-001			
Lap#	Lap Time	Split Time	Speed
Stop time	0:00'05.39		
2010/1/1			
MCH-002			
Lap#	Lap Time	Split Time	Speed
1	0:00'00.67	0:00'00.67	
2	0:00'00.22	0:00'00.89	
3	0:00'00.19	0:00'01.08	
4	0:00'00.37	0:00'01.45	
5	0:00'00.19	0:00'01.64	
Stop time	0:00'01.89		
Average time	0:00'00.32		
Fastest time	0:00'00.19		